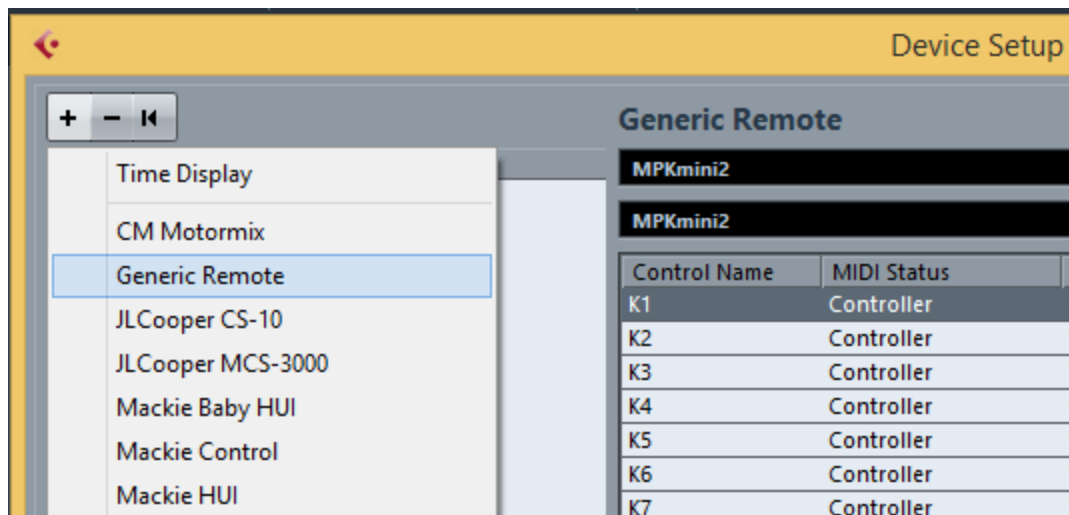


AKAI MPK mini mkII mappings guide

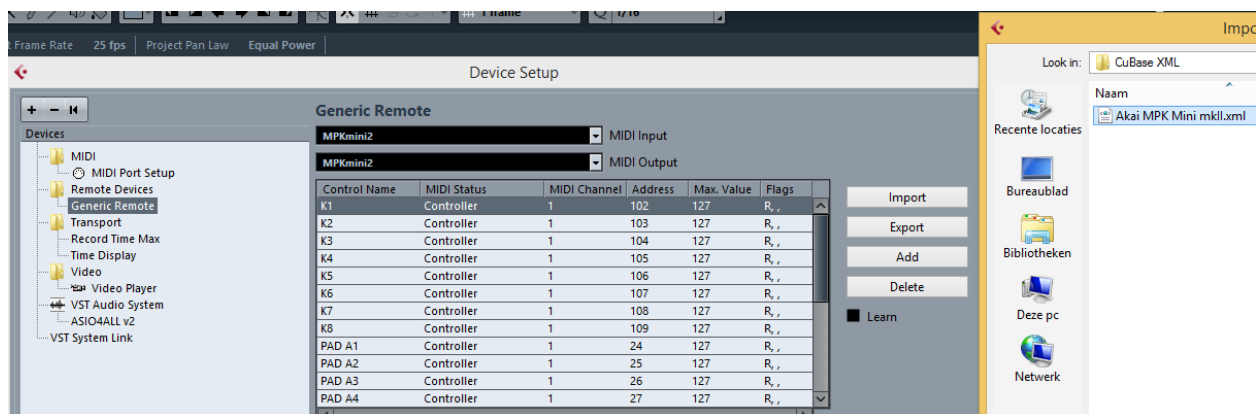
The zip contains two different sets of files.

In the AKAI MPK mini mkII folder, you'll find the programs to load up into your Akai MPK mini. These contain the necessary midi settings, so you can control cubase.

Under CuBase XML you'll find the configuration file to set up your MPK Mini in cubase. To do so, first set up a generic remote under device setup.



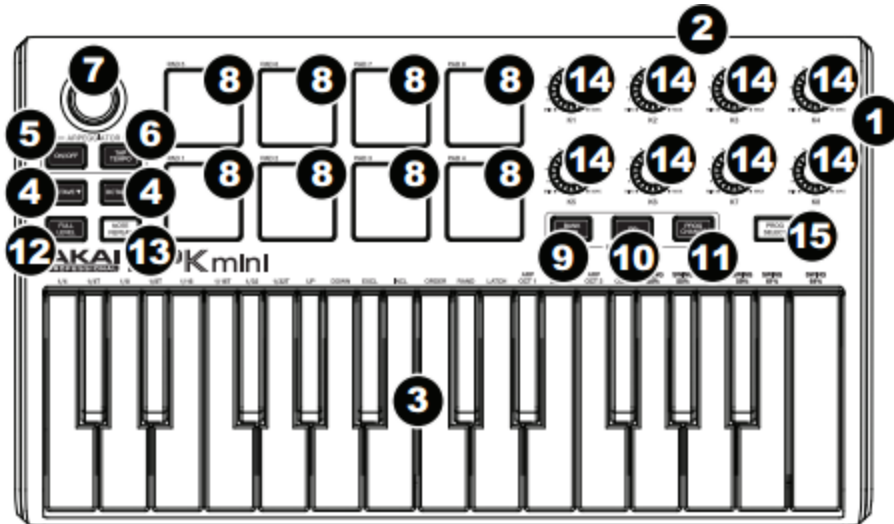
Once that's done, configure it to use your MPKmini2 for MIDI in and output, and import the Cubase XML file into the generic remote.



There you go, the hard work is done!

Included mappings

Program 1: Transport and mixing



To use the transport functionality, remember to activate CC (10)
Switch functionality of the top pads by switching between bank A and B (9)

Bank A

Pad1: Play/Pauze	Pad5: Zoom to full project
Pad2: Restart	Pad6: Zoom in
Pad3: Set left locator	Pad7: Zoom out
Pad4: Set right locator	Pad8: Zoom to locators

Bank B

Pad1: Play/Pauze	Pad5: Open markers
Pad2: Restart	Pad6: Insert marker
Pad3: Set left locator	Pad7: Locate previous marker
Pad4: Set right locator	Pad8: Locate next marker

With the knobs you can control the mixing channels in the MixConsole

Program 2: Control of Halion Sonic SE (knobs)

Program 3: Hybrid AIR (knobs)